

# A Cost-Benefit Analysis of Excel Beyond the Bell San Antonio Partner Agencies

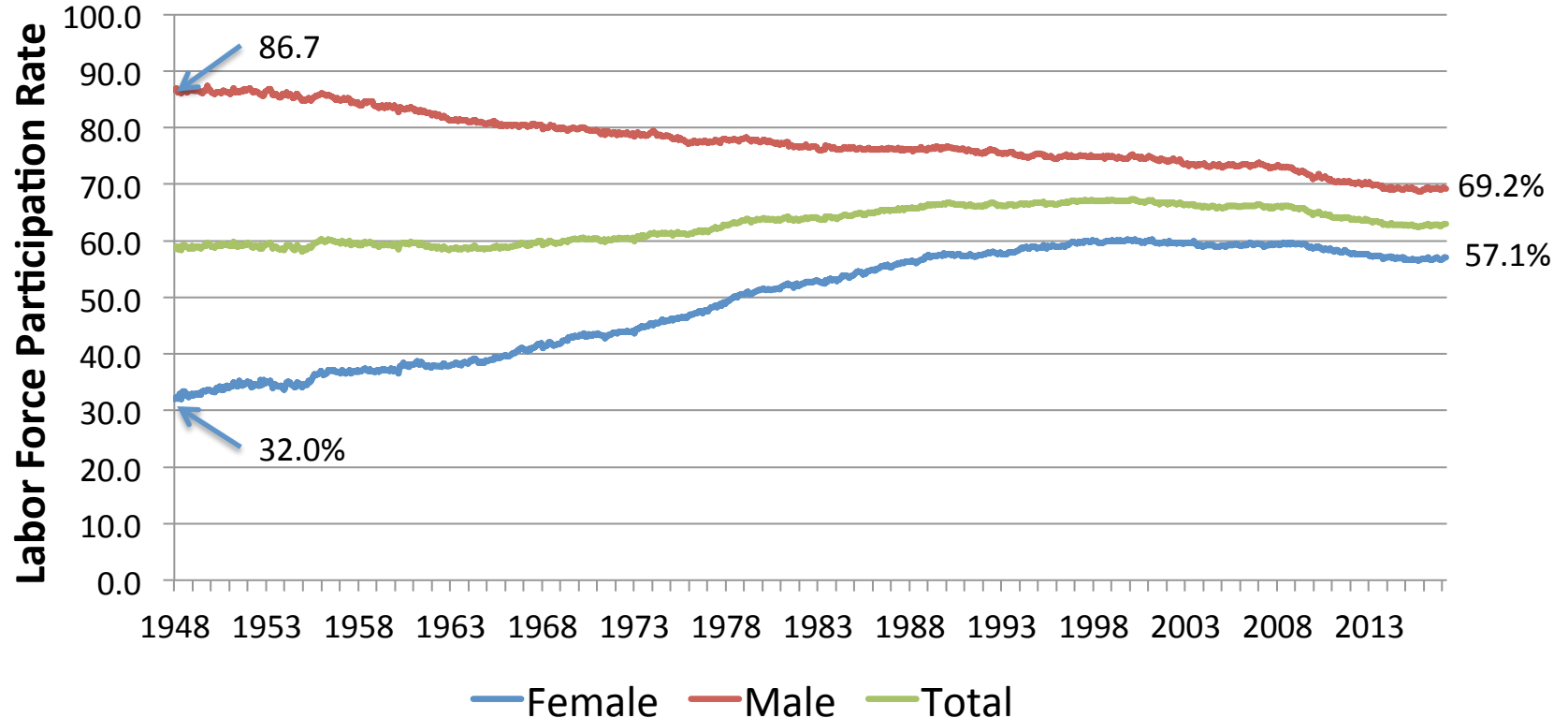
Study Conducted by:  
Steve Nivin, Ph.D. and Eddie Molina

Presented to:  
Excel Beyond the Bell San Antonio Annual Summit  
May 17, 2017

Funding for this study provided by the San Antonio Area Foundation

# Need for after-school programs driven by changing demographics and roles in the household.

## Labor Force Participation Rate by Gender



More two-parent households working full-time and working mothers mean more children unsupervised during after-school hours and out-of-school periods.

Workforce Participation of Two-Parent Households and Mothers		
	1970	2015
Two-parent households working full-time	31%	46%
<i>Labor Force Participation Rates of Mothers in 2012</i>		
With children 6-17 years old		76.0%
With children less than 6 years old		64.7%
With children less than 3 years old		60.7%
Unmarried with children less than 18 years of age		75.8%
Married with children less than 18 years of age		68.5%

Sources:

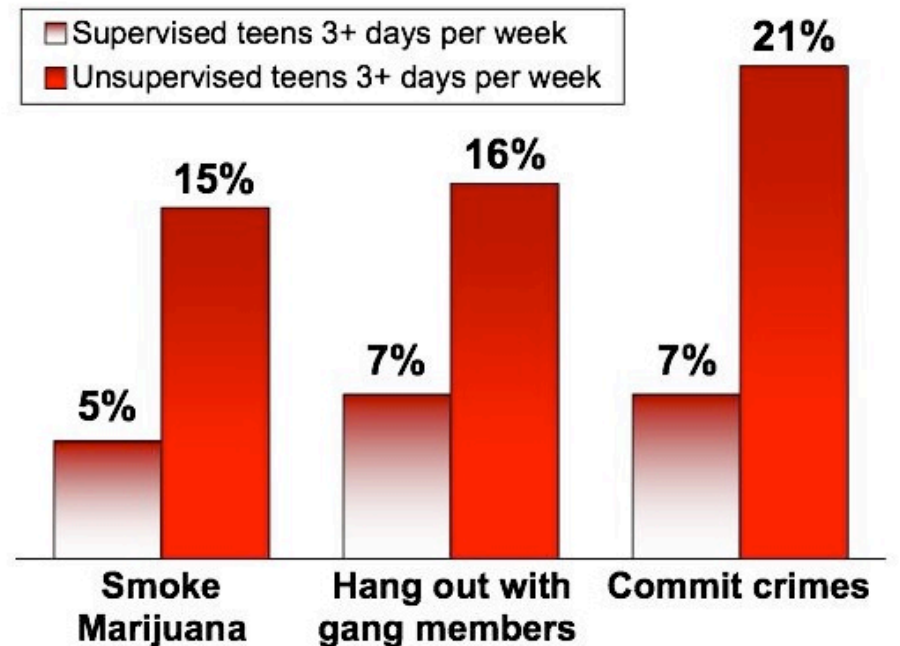
Two-parent households working full-time (Pew Research Center)

Labor force participation rates of mothers (U.S. Bureau of Labor Statistics)

# Unsupervised hours outside of school are often when young people take unhealthy risks.

- Unproductive use of the time
- Unhealthy food choices
- Choose not to be physically active
- Engage in problematic behavior or be the recipient of bad behavior

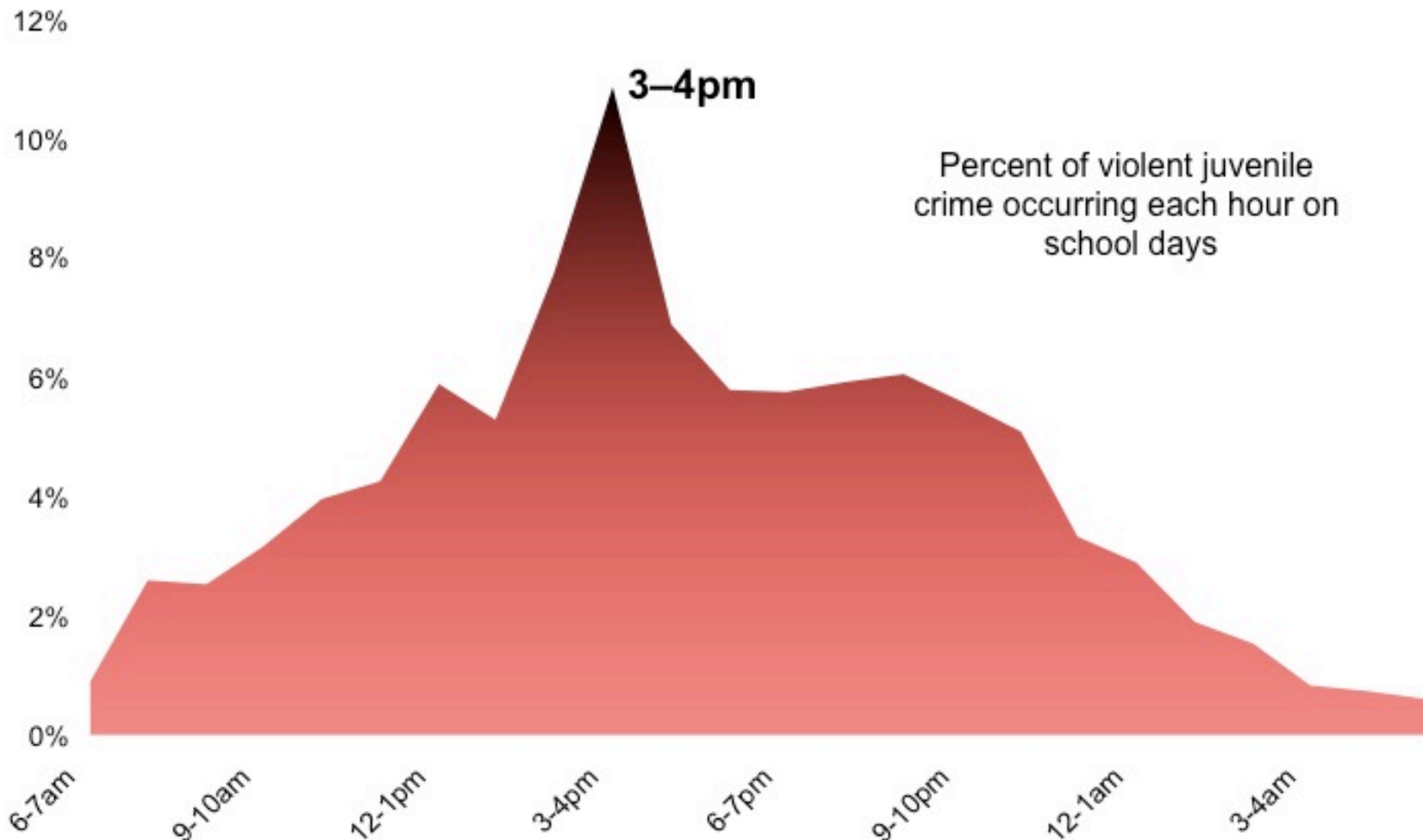
## Unsupervised Teens Are More Likely to Get into Trouble



Survey conducted by Opinion Research Corporation for Fight Crime: Invest in Kids California

Source: Fight Crime: Invest in Kids California, "After-School Programs Can Prevent Crime"

# Violent Juvenile Crime Soars When the School Bell Rings



Data from large California cities, 1999-2000 and 2000-2001 school years

Source: Fight Crime: Invest in Kids California, "After-School Programs Can Prevent Crime"

## Out-of-School time programs can lead to:

- Improved educational outcomes
  - Reduce truancy and dropout rates
  - Enhanced interest in school and desire to learn
  - Better grades and scores on standardized tests
  - Less need for remedial educational services
  - Decreased repetition of grades
- More education leads to higher incomes and less use of welfare
- Better health
- Higher levels of civic engagement
- Increased confidence and self-esteem
- Less use of drugs and alcohol
- Reduction in juvenile criminal activity

*See full report for a list of many of the studies.*

Excel Beyond the Bell San Antonio (EBBSA) Partner Agencies have had similar positive impacts on the students participating in their programs.

## Impacts of EBBSA Partner Agencies on Discipline and Attendance

	EBBSA	School Districts
Rate of Students with Discipline Incidents		
2014-2015 school year	5%	12%
2015-2016 school year	9%	11%
Rate of Students with Attendance over 90%		
2014-2015 school year	96%	86%
2015-2016 school year	94%	87%

Source: P16Plus Council of Greater Bexar County with data provided by San Antonio ISD and Harlandale ISD, *Excel Beyond the Bell 2015-2016 Education Success Scorecard*, October 2016.



## Impacts of EBBSA Partner Agencies on Educational Outcomes

	EBBSA	School Districts
<i>Rate Scoring Above PSAT Benchmark</i>		
Above reading benchmark	43%	27%
Above math benchmark	21%	11%
Above both benchmarks	18%	6%
<i>Rate of SAISD Seniors Taking &amp; Passing Algebra II</i>		
Seniors who took Algebra II	90%	78%
Seniors who passed Algebra II	99%	91%
<i>Rate Promoted to Next Grade</i>		
2014-2015 school year	98%	96%
2015-2016 school year	99%	96%

Source: P16Plus Council of Greater Bexar County with data provided by San Antonio ISD and Harlandale ISD, *Excel Beyond the Bell 2015-2016 Education Success Scorecard*, October 2016.

# What are the net benefits of these to the San Antonio community of these impacts?

Net Benefits of Excel Beyond the Bell San Antonio (2015 \$)

<i>Benefits</i>	<i>Low</i>		<i>High</i>	
	<i>Annual</i>	<i>4.5 Years</i>	<i>Annual</i>	<i>4.5 Years</i>
Increased Incomes	\$128,957,669	\$580,309,512	\$161,197,087	\$725,386,890
Non-market Benefits from Education	\$64,478,835	\$290,154,756	\$80,598,543	\$362,693,445
Welfare Savings	\$5,820,861	\$26,193,875	\$8,731,292	\$39,290,813
Increased Schooling Costs	(\$2,083,179)	(\$9,374,306)	(\$8,332,716)	(\$37,497,222)
Reduction in Crime Costs	\$70,638,303	\$317,872,365	\$244,965,580	\$1,102,345,108
Reduction in Remedial Education Costs	\$27,961,603	\$125,827,213	\$55,923,206	\$251,654,425
Decreased Grade Repetition	\$1,154,756	\$5,196,400	\$3,464,267	\$15,589,200
Child Care Savings	\$6,341,558	\$28,537,011	\$12,683,116	\$57,074,021
<b>Total Benefits</b>	<b>\$303,270,406</b>	<b>\$1,364,716,826</b>	<b>\$559,230,373</b>	<b>\$2,516,536,680</b>
<i>Costs</i>	<i>Annual</i>	<i>4.5 Years</i>	<i>Annual</i>	<i>4.5 Years</i>
Direct Costs	\$82,952,947	\$373,288,262	\$82,952,947	\$373,288,262
Volunteer Opportunity Cost	\$27,740,175	\$124,830,788	\$55,480,350	\$249,661,575
Direct and Volunteer Opportunity Costs	\$110,693,122	\$498,119,049	\$138,433,297	\$622,949,837
<i>Net Benefits</i>	<i>Annual</i>	<i>4.5 Years</i>	<i>Annual</i>	<i>4.5 Years</i>
Benefits Less Direct Costs	\$220,317,459	\$991,428,564	\$476,277,426	\$2,143,248,419
Benefits Less Direct and Volunteer Opportunity Costs	\$192,577,284	\$866,597,777	\$420,797,076	\$1,893,586,844
Benefit-Cost Ratio (based on direct costs)		\$3.66		\$6.74
Benefit-Cost Ratio (based on direct and volunteer costs)		\$2.74		\$4.04

# Summary

- The work of the EBBSA partner agencies is having a large positive impact across the community.
- The agencies generate a substantial return on investment.
- The continued success of these programs is vital to the continued development of the San Antonio economy into the future.

Find the report online:  
Beyondthebellsa.org

# A Cost-Benefit Analysis of Excel Beyond the Bell San Antonio Partner Agencies

Study Conducted By:

Steve Nivin, Ph.D. and Eddie Molina

May 2017

 **STEVEN R. NIVIN** PH.D., LLC  
Economic Research & Consulting

[f](#) [t](#) [i](#) SUMMIT PROGRAM FOR MAY 17TH



[HOME](#) [ABOUT](#) [MEMBERS](#) [PARTNERS](#) [SCHOOLS & DISTRICTS](#) [🔍](#)

success.

Read our Cost Benefit Analysis

Read It